

# Managing your vehicles remotely

---

**68**  
Mph

**Peter Smith**

Started  
**8:27**am

Driven  
**42**mins

On-site  
**7:40**hrs



2020 saw businesses adopt new ways of working in a widespread effort to avoid and reduce employee travel. Companies that once kept their vehicles in depots overnight began sending those vehicles home with their drivers, so that employees no longer needed to use public transport or visit a central depot to pick up their vehicles.

When operating in this way, being able to keep an eye on your vehicles, both in and out of work hours, is more important than ever. You need to know:

- ☑ Where your vehicles are at any time of the day;
- ☑ Whether your vehicles are being used out of hours; and
- ☑ If your employees are driving your vehicles safely

Vehicle tracking can give you all the answers—it's a tool you can't afford to be without.

## Tracking your vehicles 24/7

Visibility is the key benefit of vehicle tracking. This is especially necessary if employees are taking vehicles home overnight, for extended periods of time. Whereas before you could manually account for your vehicles when they were checked out and returned to your depot, now you need to account for multiple vehicles at many different sites. Quartix real-time tracking lets you view your vehicles' locations at any time, from any device, so you're not tied to your desktop computer after-hours.

*"The system is useful to us from a safety perspective as well as it enables us to keep tabs on our engineers, like checking that they have got home in the evening without having to call them."*

**Dave Tobutt,**

Operations Manager,  
Guildford Borough

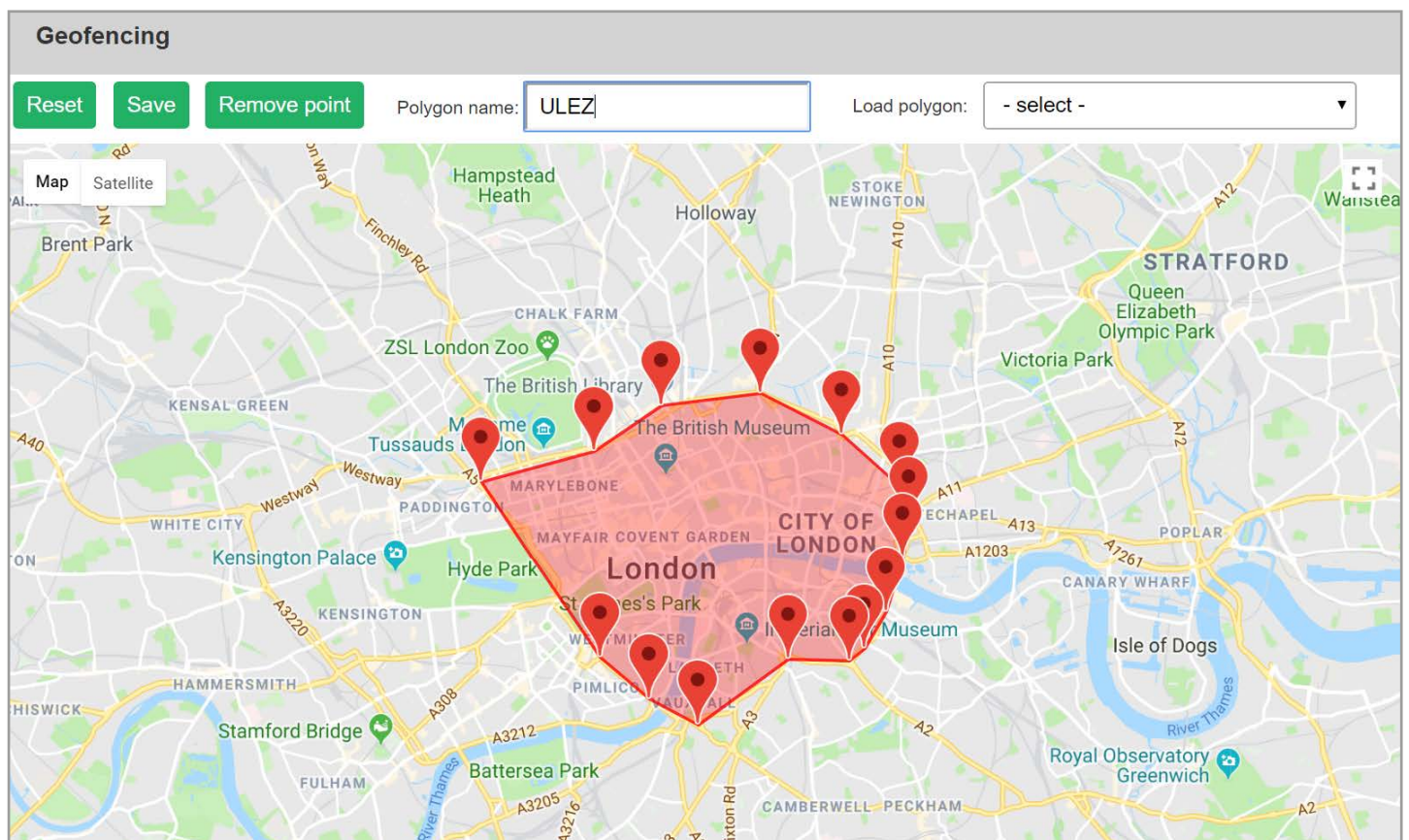


## Watching out for unauthorised vehicle use

Keeping an eye on your vehicles also includes ensuring that they are only being used within working hours, for business and/or permitted purposes. Timesheets, time on site and out of hours reports make this an easy task. These reports can be set up to be delivered automatically on a daily, weekly or monthly basis, to multiple email addresses. Another way to ensure vehicles aren't being used after hours is geofencing. You can set up geofences around individual addresses, establish times when your vehicles must be in or out of these zones, and then receive real-time alerts if those rules are broken.

*"We had a customer who received an alert that his vehicle, which was parked in his drive, had been moved—turned out it had been stolen along with his wife's vehicle, which wasn't tracked. Because he had a tracking device in his van, the police were able to recover both vehicles."*

**Sean Maher,**  
Head of Sales, Quartix



## Monitoring driving style at all hours

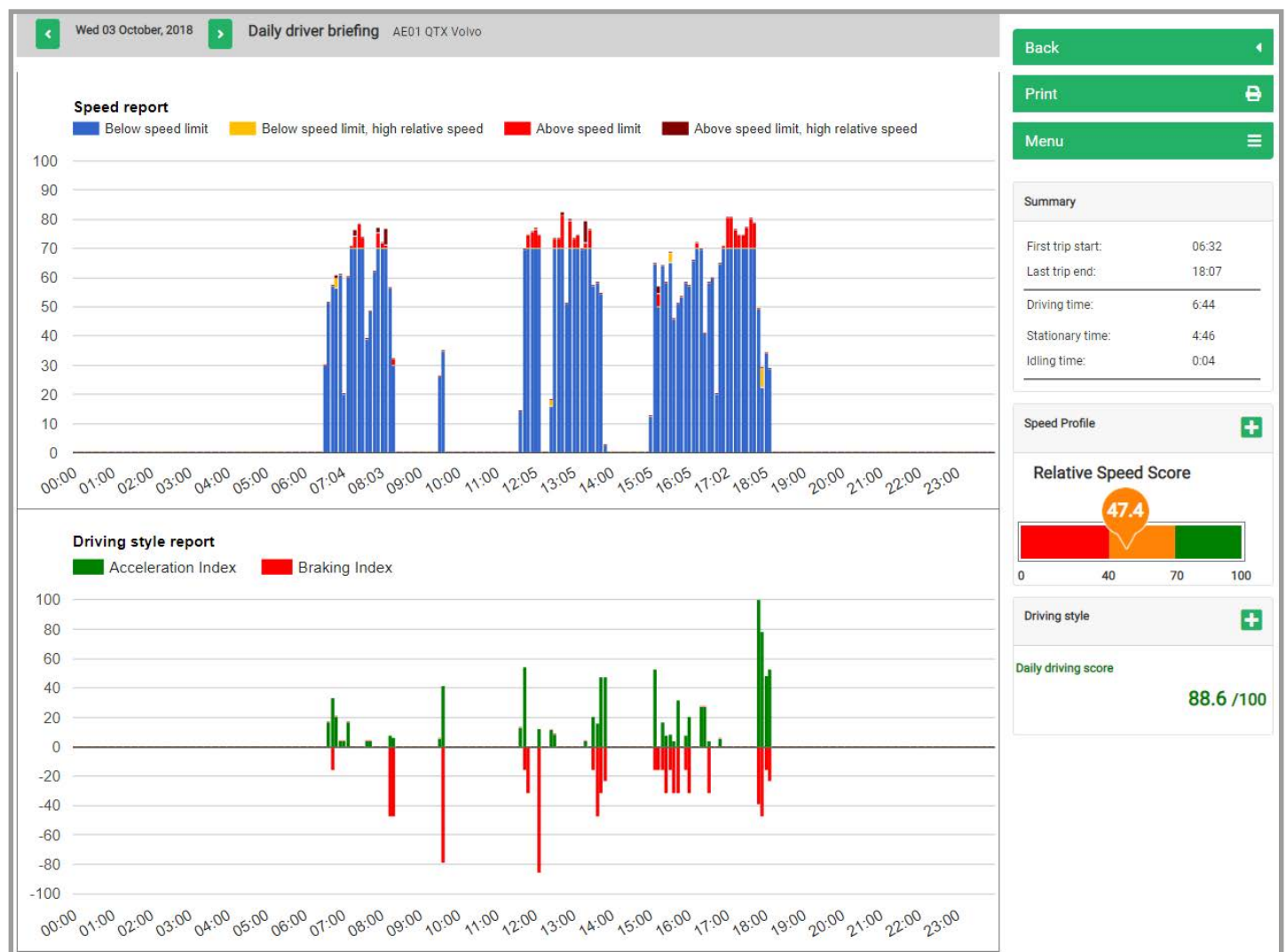
If your employees are driving your vehicles after hours, you want to make sure they are being as careful on the roads as they would be if they were on the clock. **Driving style reports** give you a complete picture of your driver's speed, acceleration and braking by assigning each vehicle a driving score. These scores can be compared across your fleet to see who is driving safely and who is taking more risk than necessary.

[Learn how the Quartix system calculates driving scores.](#)

*"We've seen around a 20% improvement in driving style across the fleet. Since using Quartix, our drivers are now in the 80-100 driving score range, which is where we wanted to be. We're doing daily briefings with the drivers and they can easily see how their driving style has improved."*

**Karl Davidson,**

Depot & Transport Manager,  
St Austell Brewery



If you are looking for a vehicle tracking supplier or thinking about switching suppliers, now is a great time to get a **free demo of the Quartix system** or start a free trial.

To find out more, visit [www.quartix.com/en-gb/](http://www.quartix.com/en-gb/) or contact 01686 806 663.